

## OT 100/220-240/4A2 P5 (PHASE OUT)

OPTOTRONIC - ON/OFF ADJ High Current IP65 | Constant current LED driver



### Product family features

- Overtemperature protection
- Available with different wattage: 100 W, 150 W, 200 W
- Line voltage: 220...240 V
- Current setting via potentiometer without programming

### Product family benefits

- High surge protection: up to 6 kV
- High efficiency
- Adjustable and wide output current range
- Constant current output
- Protection through double isolation between primary and secondary side (SELV)
- IP rating: IP65
- Long lifetime: up to 100,000 h

## Areas of application

- Independent installation
- Street and urban lighting
- Industry
- Suitable for luminaires of protection class I

## Technical data

### Electrical data

Nominal input voltage	220...240 V
Nominal output current	2100...4200 mA <sup>1)</sup>
Nominal output power	100 W <sup>2)</sup>
Nominal output voltage	24...48 V
Maximum output power	100 W
Mains frequency	50...60 Hz
Input voltage AC	198...264 V <sup>3)</sup>
Device power loss	14 W
Efficiency in full-load	88 % <sup>4)</sup>
Inrush current	50 A
Max. ECG no. on circuit breaker 10 A (B)	5
Max. ECG no. on circuit breaker 16 A (B)	8
Max. ECG no. on circuit breaker 25 A (B)	13
Output current tolerance	±5 %
Power factor $\lambda$	> 0.99 / > 0.90 <sup>5)</sup>
Surge capability (L-N)	6 kV
Surge capability (L/N-Ground)	6 kV
Total harmonic distortion	< 10 %
U-OUT (working voltage)	60 V

1) ±5%

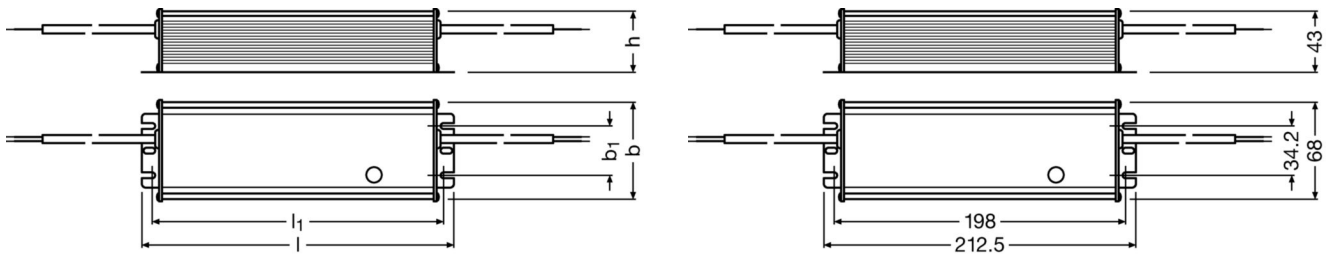
2) Partial load 51...100 W

3) Permitted voltage range

4) at 230 V, 50 Hz

5) Full load at 220...240 V<sub>AC</sub>/50 Hz / Half load at 220...240 V<sub>AC</sub>/50 Hz

## Dimensions & weight



<b>Length</b>	212.5 mm
<b>Height</b>	42.5 mm
<b>Width</b>	68.0 mm
<b>Product weight</b>	1000.00 g
<b>Cable cross-section, input side</b>	1.0 mm <sup>2</sup>
<b>Cable cross-section, output side</b>	1.0 mm <sup>2</sup>
<b>Wire preparation length, input side</b>	10 mm
<b>Mounting hole spacing, length</b>	201.6 mm

## Colors & materials

<b>Casing material</b>	Metal
------------------------	-------

## Temperatures & operating conditions

<b>Ambient temperature range</b>	-40...+55 °C
<b>Max.housing temperature in case of fault</b>	110 °C
<b>Maximum temperature at tc test point</b>	85 °C
<b>Permitted rel. humidity during operation</b>	5...85 % <sup>1)</sup>
<b>Temperature range at storage</b>	-40...+85 °C

1) Maximum 56 days/year at 85 %

## Expected Lifetime

Product name				
OT 100/220-240/4A2 P5	ECG ambient temperature [ta]			
	Temperature at tc-point [°C]	80	70	
	Lifetime [h]	50000	80000	

## Lifespan

<b>ECG lifetime</b>	50000 h <sup>1)</sup>
---------------------	-----------------------

1) At maximum  $T_c = 80^\circ\text{C}$  / 10% failure rate / At  $T_c = 70^\circ\text{C}$  / 10% failure rate

## Capabilities

<b>Dimmable</b>	No
<b>Max. cable length to lamp/LED module</b>	1.0 m <sup>1)</sup>
<b>Overload protection</b>	Automatic reversible
<b>Overheating protection</b>	Automatic reversible
<b>Suitable for fixtures with prot. class</b>	I
<b>Intended for no-load operation</b>	No
<b>No-load proof</b>	Yes
<b>Number of channels</b>	1
<b>Short-circuit protection</b>	Yes

1) Output wires must be routed as close as possible to each other

## Programming

Programming device	not relevant
--------------------	--------------

## Certificates & standards

Type of protection	IP65
Approval marks – approval	CCC / CE / CB
Standards	Acc. to EN 61347-1 / Acc. to EN 61347-2-13 / Acc. to EN 55015 / Acc. to EN 61547 / Acc. to EN 61000-3-2 / Acc. to EN 61000-3-3 / Acc. to EN 60598-1 / Acc. to EN 62384

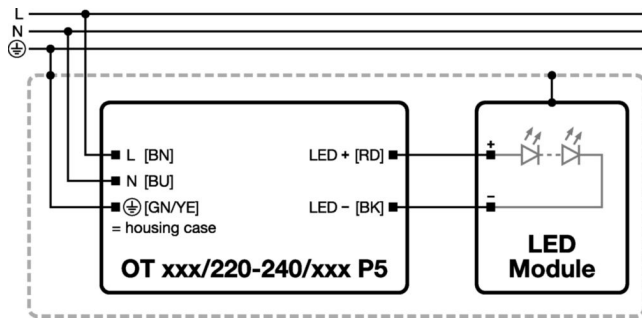
## Logistical data

Commodity code	85044083900
----------------	-------------

## Environmental information

Information according Art. 33 of EU Regulation (EC) 1907/2006 (REACH)	
Declaration No. in SCIP database	In work
Date of Declaration	21-08-2024
Primary Article Identifier	4052899410657
SCIP_STATUS	In work
SCIP_ID	

## Wiring Diagram



723286\_Wiring Diagramm OT XXX/220-2420/XXX P5

### Ecodesign regulation information:

Intended for use with LED modules.

The forward voltage of the LED light source shall be within the defined operating window of the control gear in all operating conditions including dimming if applicable.

Separate control gear and light sources must be disposed of at certified disposal companies in accordance with Directive 2012/19/EU (WEEE) in the EU and with Waste Electrical and Electronic Equipment (WEEE) Regulations 2013 in the UK. For this purpose, collection points for recycling centres and take-back systems (CRSO) are available from retailers or private disposal companies, which accept separate control gear and light sources free of charge. In this way, raw materials are conserved and materials are recycled.

## Download Data

File		
Brochures	PDF	▶ 4 DIM NFC G3 CE LED drivers and T4T C (EN)
CAD data 3-dim	Compressed	▶ OT High current 100W
Mandatory Publications	PDF	▶ OT P5 WP UK DoC 4307611 030621
Declarations of conformity	PDF	▶ OT P5 WP CE 3218662 180823



## Logistical Data

Product code	Product description	Packaging unit (Pieces/Unit)	Dimensions (length x width x height)	Volume	Gross weight
4052899410657	OT 100/220-240/4A2 P5	Shipping carton box 10 Pieces	292 x 282 x 212 mm	17.46 dm <sup>3</sup>	1078.30 g

The mentioned product code describes the smallest quantity unit which can be ordered. One shipping unit can contain one or more single products. When placing an order, for the quantity please enter single or multiples of a shipping unit

## Disclaimer

Subject to change without notice. Errors and omission excepted. Always make sure to use the most recent release.